



RETAIL



CHANNEL



e-COMMERCE

Route  
Optimization



Reverse  
Logistics



Vehicle  
Monitoring



Temperature  
Monitoring



Right Time  
Right Place  
Right Product

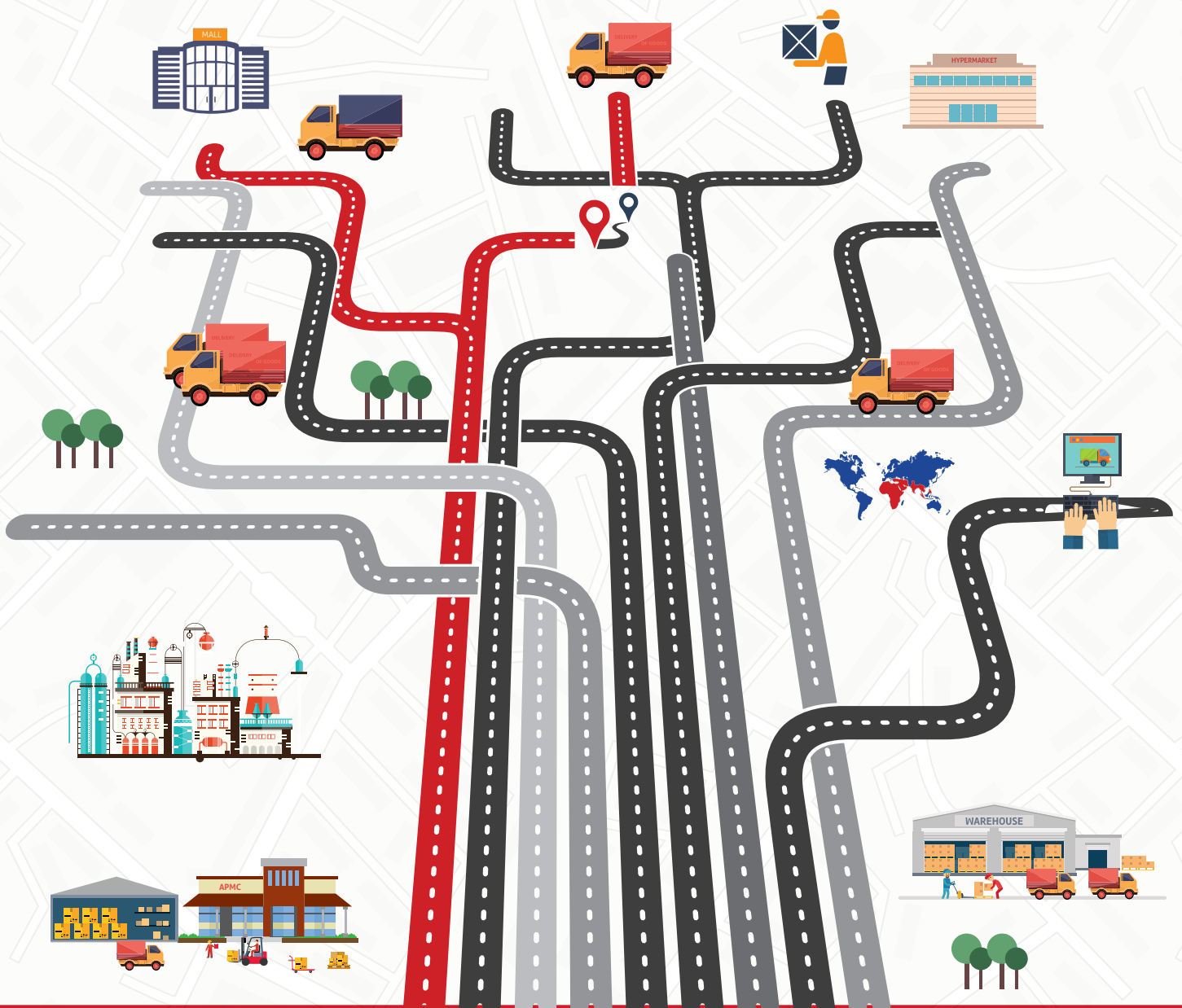


Fleet  
Management

With the world getting used to enjoying everything at their fingertips, there has been a rapid growth in e-commerce and m-commerce. This has caused widespread growth in the sheer size of distribution logistics across the globe. Logistics vendors are struggling every passing day to keep order in the chaos and make the systems as profitable as they can. But there are several challenges that they face at either end of the systems that keep them from flourishing.

At t4u, we believe there is a method in this madness. And by putting advanced technologies to work intelligently, we are creating patterns that can help companies in distribution logistics achieve profitability, and continuity. This encourages them to follow an ecosystem model while keeping the customer at the very core of the solution.

By making people and processes more efficient, t4u is helping distribution logistics vendors across different verticals such as cold chains, cash management, e-Commerce logistics and others, optimize their services and achieve higher levels of customer satisfaction.





### ERP Integration



### Route Optimization

- Creation of routes and trips
- Territory planning
- Flexibility in route planning
- Association of vehicle with trips
- Trip-wise report
- Optimum utilization of capacity
- Delivery status & confirmation reports



### Temperature Monitoring

- Remote temperature monitoring
- Asset power consumption pattern monitoring
- Temperature rise alerts
- Refrigerator on/off alerts
- Predefining different temperature for different trips



### Consignment

- Consignment allocation
- Reverse logistics
- Account receivable module
- Hub and spoke creation
- Delivery scheduling
- Distribution channel management
- Alerts on delivery or any deviations



### Vehicle Monitoring

- Vehicle position using real time tracking interface
- Vehicle distance coverage progress report
- Increased vehicle usage rate
- Vehicle summary's report
- Hub arrival and departure report
- Senior management MIS
- Speed and monitoring report



### Fleet Management

- Comprehensive management and monitoring platform
- Exception monitoring and report
- Statutory & periodic maintenance module
- Preventive maintenance status reports
- Spares consumption and inventory reports
- Month-wise repair expense reports



## About t4u

---

Based in Bangalore, India, telematics4u services pvt. ltd. (t4u) operates in the space of Internet of Things (IoT) that is focused on bringing the world together through smarter connections and intelligent use of IoT technology. t4u is a pioneering organization that is seamlessly bridging the boundaries between public (government), private(business), and social (non-profit) sectors, operating in what is the emerging fourth sector of doing business.

t4u provides operations management solutions across a spectrum of industry segments and verticals, with execution capabilities and installations dotted across 50+ countries. Our end-to-end leading edge technology platform and solutions empowers clients with high visibility and control across the field of critical assets that they manage, right to the very edge of the supply chain.

t4u's vision is to enable a world of inclusive, intelligent ecosystems.

---



telematics4u services pvt. ltd.  
#9, 1st Main, New BEL Road,  
Sanjaynagar, Bangalore- 560 094, INDIA

 +91-80-46503700

 [info@telematics4u.com](mailto:info@telematics4u.com)

 [www.telematics4u.com](http://www.telematics4u.com)